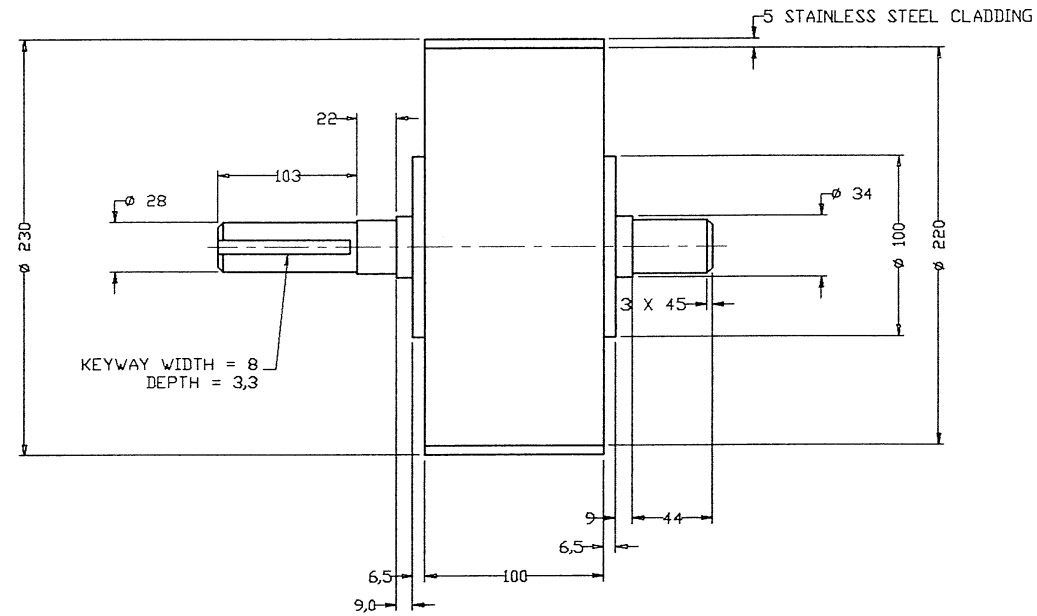


IST	DRAWING STATUS	ACTIVE:	SIGN:	DATE:
INFORMATION ONLY				
FOR 3rd. PARTY APPROVAL				
PERMIT MATERIAL ORDER				
FOR MANUFACTURE				
AS BUILT				
SUPERSEDED				



M12 BOLTS & WASHER 4 PLACES
x 35 LONG

MOTOR 0,25 Kw
OUTPUT SPEED - 2,6 RPM
RATIO 537 (TYPE E49069 Pg 18)
GEARBOX K60-Z10 (Pg 88)
OBTAINABLE FROM FLENDLER HIMMEL

TAPER-LOCK BUSH
SERIES 2012
BORE DIA $\phi 35$

HRC 150 FENNER COUPLING

TAPER-LOCK BUSH
SERIES 2012
BORE DIA $\phi 28$

BEARING
TYPE NUP 206
ID = 62
ID = 30
W = 16
(SKF)

NOTES (UNLESS OTHERWISE STATED)								MATERIAL:		GENERAL TOLERANCES	
1) REMOVE ALL BURRS & SHARP EDGES TO 0,5mm MAX.	2) SCREW THREADS TO ISO 261	3) SURFACE TEXTURE: 3,2 (Ra TO ISO 1302)	4) ALL INTERNAL RADI 0,3 MAX.	MILD STEEL AND STATED	X	XX	XXX	ANGLES	±0,5	±0,2	±0,05
TO SABS 0111								TITLE : DRIVE DETAIL			
DISC NO/FILE NAME								DRG NO : VTFO-60040-02			
VTFOA50H								SCALE : 1:2			
REVISION DETAILS								SHIT 1 OF 1			
ISS C/NOTE DRAWN CHECK APPR P.OFF. DATE								WHEN PLOTTED ON UNLESS OTHERWISE STATED			